

BasinView[®] Overview

BasinView links the products in the Petroleum Systems Suite, including BasinMod[®], BasinMod Risk, Migration and PetroAnalyst. Multiple BasinMod well models as well as surface grids or isopachs can be imported and used to generate surfaces for a multitude of calculated values. Results can be displayed as maps, cross-sections, and in 3-D using the three-dimensional surface viewer.

BasinView:

- Displays calculated results as surfaces for multiple, user-defined time steps.
- View maps of hydrocarbon generated, expelled, and retained, maturity, porosity, permeability.
- Modify gridding parameters to enhance local features or directional trends.
- Correct crossing horizons and insert new horizons.
- Multi-core processing for increased speed
- 64-bit application for handling larger data sets

Input:

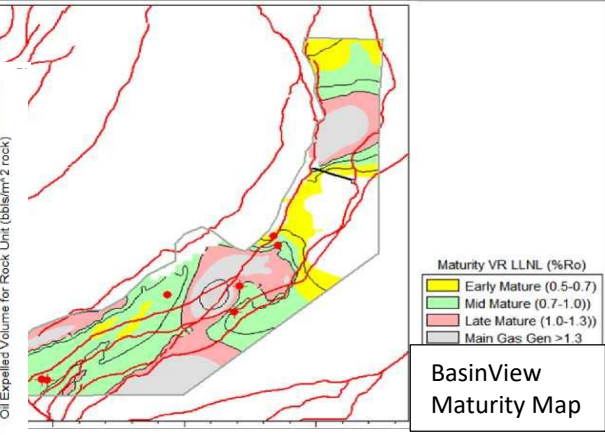
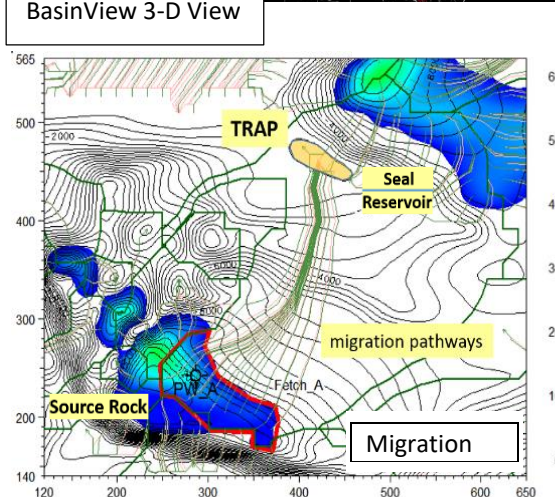
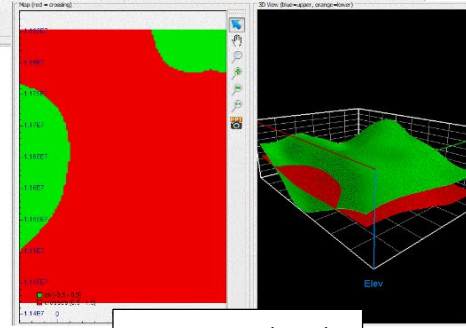
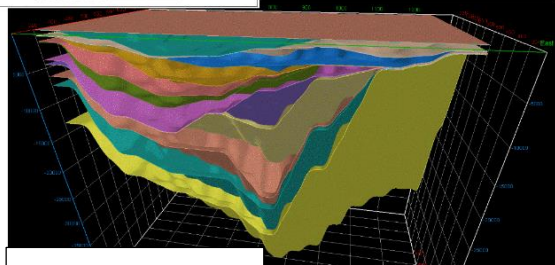
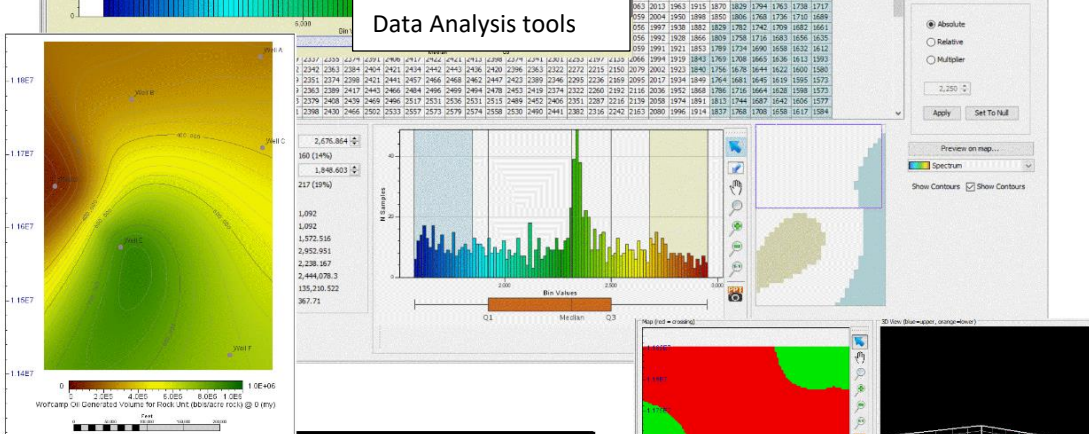
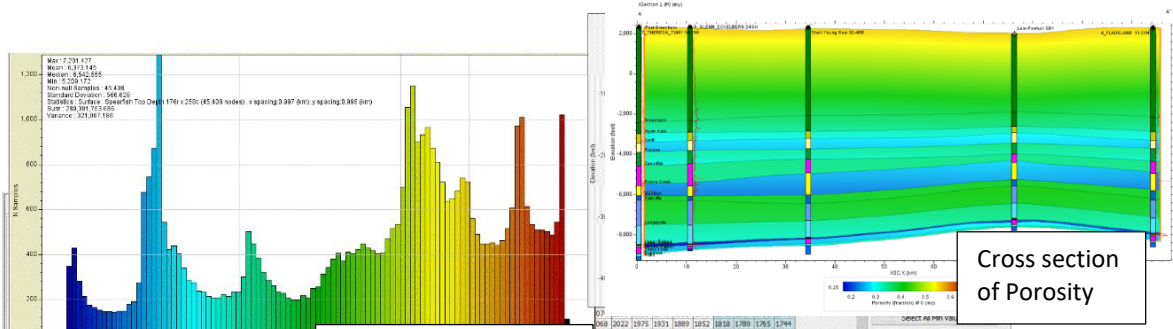
- Gridded data from Z-Map, ARC/Info, Surfer, and others.
- Any data in ASCII xyz format.
- Models from BasinMod.
- Cultural data such as coastlines and lease boundaries in ESRI Shapefile format.
- User-created surfaces for thickness, missing thickness, porosity, Total Organic Carbon and other values.

Gridding:

- Minimum curvature flex gridding
- Exploratory Data Analysis tools allow identification and editing of outliers and data QC
- Grid-to-grid manipulation allows for well log or measured data to be converted to different values; time-depth conversion
- Generate derivative maps for modelling slope and flexure
- Extend or crop grids to fit the area of interest
- Smoothing and decimation to remove small inconsistencies

Output:

- Maps of calculated values at present day and at user-defined paleo ages.
- Cross-section for all calculated values for user-defined lines on the map.
- Export results in a variety of formats to other mapping packages or software.
- BasinView surfaces are input to Migration and PetroAnalyst
- The Migration option provides exploration target prediction by modelling location of traps, trap properties, trap fill and spill, plus migration pathways.
- Reports, PowerPoint Generator and automated animations



PRA
 Platte River Associates, Inc.

Platte River Associates, Inc.
 547 South Brandon Court, Suite B
 Superior, CO 80027 USA
 +1-303-448-0480
 info@platte.com
 www.platte.com