

BasinMod 2-D Overview

BasinMod 2-D models dynamic geologic conditions through time within a petroleum system, by examining hydrocarbon generation from source rocks through secondary migration and accumulation in traps.

Model building:

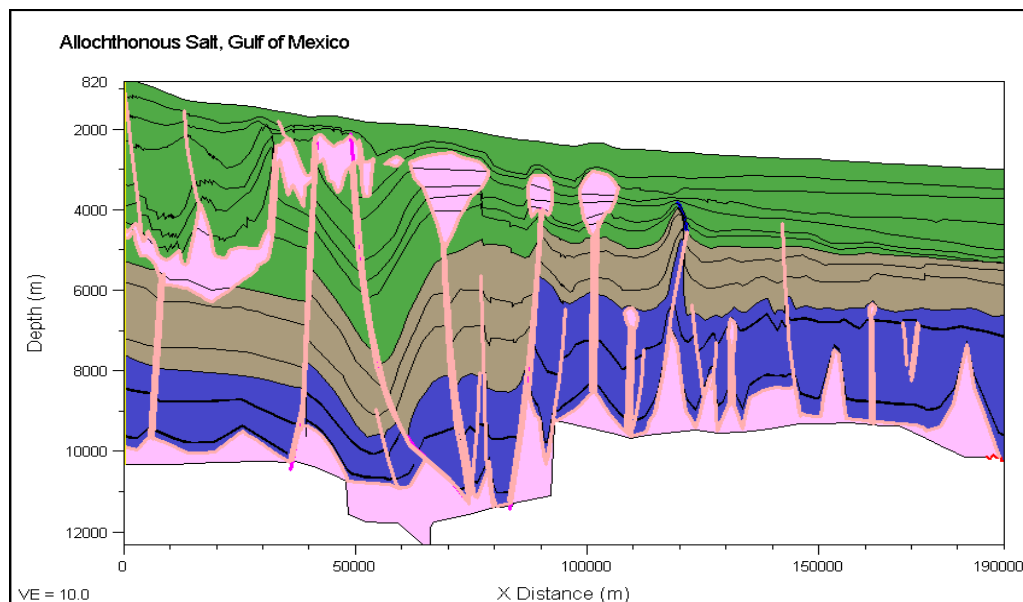
- Import data including BasinMod model files, digitized or scanned cross sections, interpreted horizons or interpret directly from seismic lines.
- Build 2-D models automatically from BasinMod
- Easily handle complex stratigraphy, including complicated unconformities.
- Vary surface temperature and heat flow through time.
- Model lateral and vertical facies successions.
- Graphically display and edit chronostratigraphic section.

Calculations:

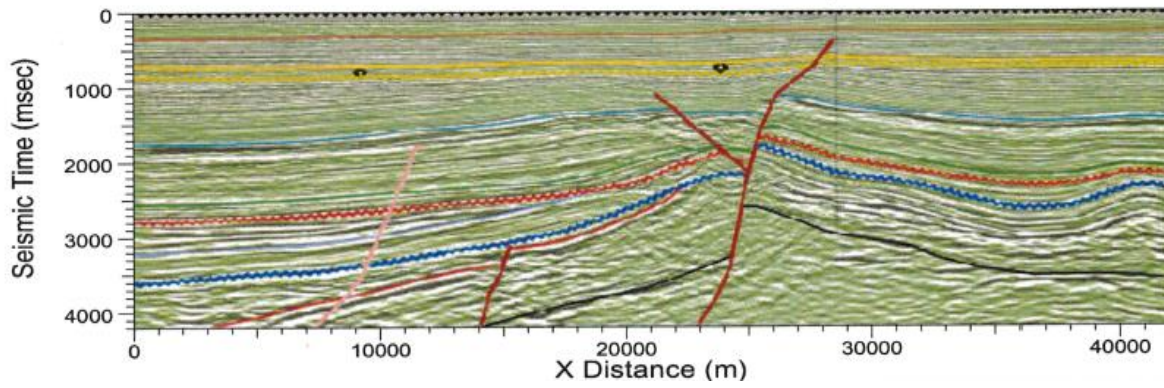
- Calculation engine combines backstripping and forward modeling.
- Calculate values for all cells in a calculation grid. The variation of pressure and fluids in adjacent cells drives migration.
- Uses finite difference method for thermal and fluid flow calculations.
- Fluid flow along faults may be automated or manually controlled.
- Calculate effects of mobile substrates (e.g., salt, shale) through time.

Output:

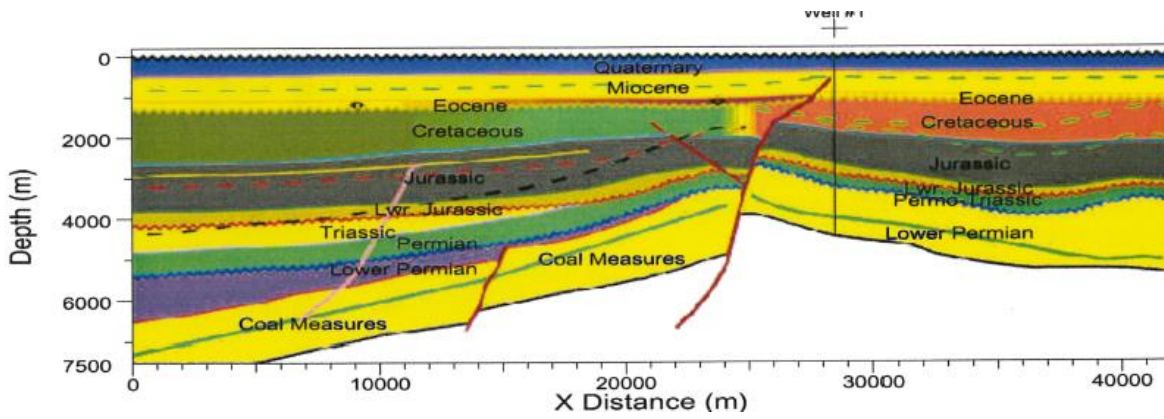
- Display model values, such as temperature, pressure, maturity, generation, and saturation in cross section either as continuous color or value windows at any point in time.
- Measured maturity, porosity, temperature and pressure may be displayed on the cross section for calibration.
- Draw a burial history or plot any model value versus time or depth.
- Display flow arrows for oil, gas and water.



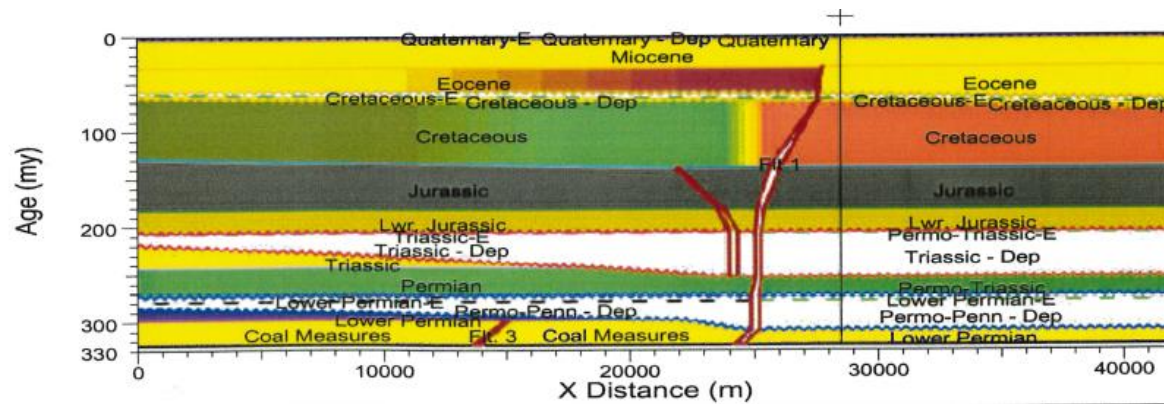
Model the entire Petroleum System from Source to Trap



Cross Section constructed from SEG-Y file



Cross section converted to depth section



Cross section displayed in chronostratigraphy (Wheeler Diagram)



Platte River Associates, Inc.
547 South Brandon Court, Suite B
Superior, CO 80027 USA
+1.303.448.0480
info@platte.com
www.platte.com